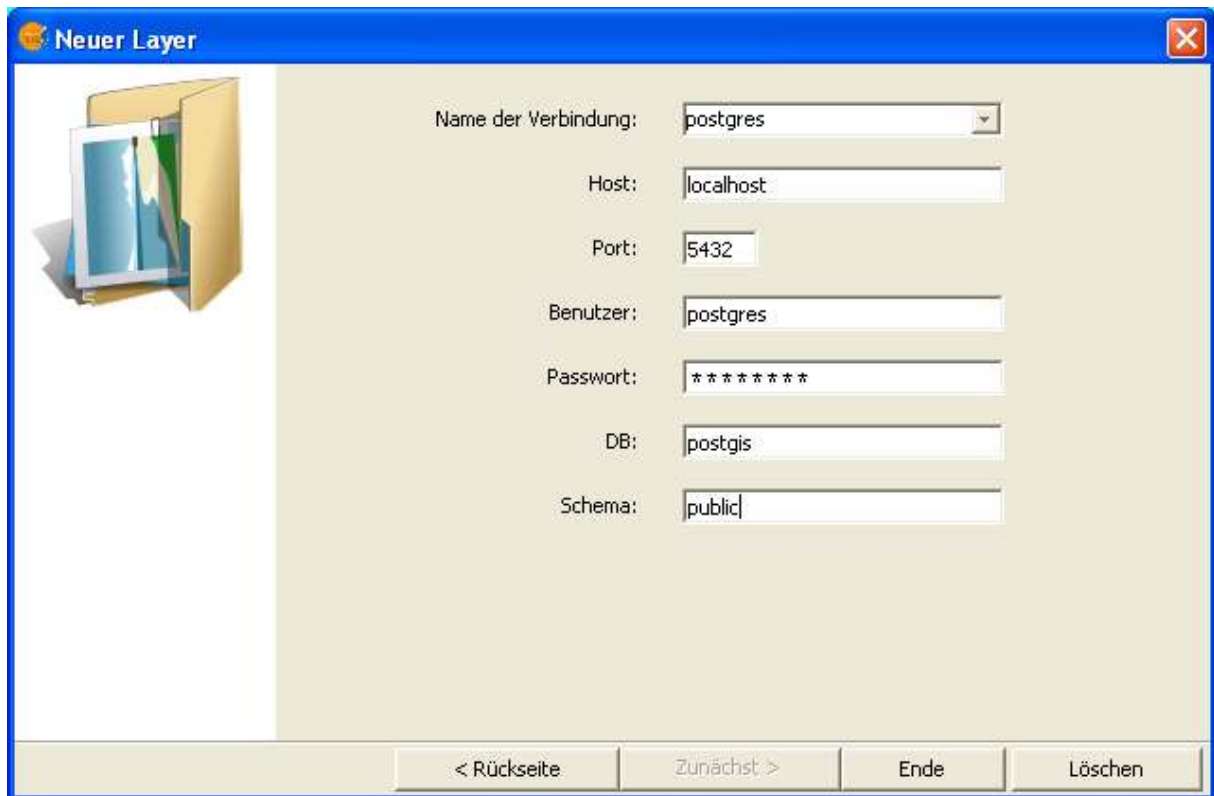


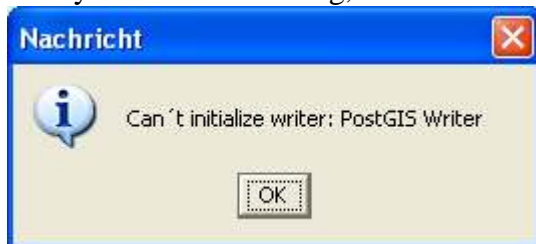
## problem while trying to store a new layer as a PostGIS table

OS: Windows XP Prof SP2, PostgreSQL 8.3/PostGIS 1.3.3, gvSIG 1.9b build 1237

After calling the function under “View > New layer > New PostGIS table”, having decided what type of geometry and attribute fields I want to build, the window for entering the PostGIS connection parameters appears:



If I try to finish this dialog, the error message appears:



No new PostGIS- layer can be created!

Hint: I can load PostGIS- layers from the same DB-connection with “add layer > GeoDB” and I can organize the connection with the help of “DB manager” (menu display > DB manager)

**gvsig.log:**

## Can't initialize writer: PostGIS Writer

```
at
com.iver.cit.gvsig.fmap.drivers.jdbc.postgis.PostGISWriter.initialize(PostGISWriter.java:104
)
at
com.iver.cit.gvsig.gui.cad.MyFinishAction.performAction(MyFinishAction.java:197)
at
jwizardcomponent.DefaultJWizardComponents.finishButton_actionPerformed(DefaultJWizar
dComponents.java:206)
at
jwizardcomponent.DefaultJWizardComponents$4.actionPerformed(DefaultJWizardCompone
nts.java:194)
at javax.swing.AbstractButton.fireActionPerformed(Unknown Source)
at javax.swing.AbstractButton$Handler.actionPerformed(Unknown Source)
at javax.swing.DefaultButtonModel.fireActionPerformed(Unknown Source)
at javax.swing.DefaultButtonModel.setPressed(Unknown Source)
at javax.swing.plaf.basic.BasicButtonListener.mouseReleased(Unknown Source)
at java.awt.Component.processMouseEvent(Unknown Source)
at javax.swing.JComponent.processMouseEvent(Unknown Source)
at java.awt.Component.processEvent(Unknown Source)
at java.awt.Container.processEvent(Unknown Source)
at java.awt.Component.dispatchEventImpl(Unknown Source)
at java.awt.Container.dispatchEventImpl(Unknown Source)
at java.awt.Component.dispatchEvent(Unknown Source)
at java.awt.LightweightDispatcher.retargetMouseEvent(Unknown Source)
at java.awt.LightweightDispatcher.processMouseEvent(Unknown Source)
at java.awt.LightweightDispatcher.dispatchEvent(Unknown Source)
at java.awt.Container.dispatchEventImpl(Unknown Source)
at java.awt.Window.dispatchEventImpl(Unknown Source)
at java.awt.Component.dispatchEvent(Unknown Source)
at java.awt.EventQueue.dispatchEvent(Unknown Source)
at
com.iver.andami.ui.AndamiEventQueue.dispatchEvent(AndamiEventQueue.java:58)
at java.awt.EventQueue.dispatchEventImpl(Unknown Source)
at java.awt.EventQueue$4.run(Unknown Source)
at java.awt.EventQueue$4.run(Unknown Source)
at java.security.AccessController.doPrivileged(Native Method)
at java.awt.Dialog.show(Unknown Source)
at java.awt.Component.show(Unknown Source)
at java.awt.Component.setVisible(Unknown Source)
at com.iver.core.mdiManager.NewSkin.addJDialog(NewSkin.java:447)
at com.iver.core.mdiManager.NewSkin.addWindow(NewSkin.java:234)
at com.iver.cit.gvsig.CreateNewLayer.execute(CreateNewLayer.java:137)
at com.iver.andami.plugins.ExtensionDecorator.execute(ExtensionDecorator.java:89)
at com.iver.andami.ui.mdiFrame.MDIFrame.actionPerformed(MDIFrame.java:673)
at javax.swing.AbstractButton.fireActionPerformed(Unknown Source)
at javax.swing.AbstractButton$Handler.actionPerformed(Unknown Source)
at javax.swing.DefaultButtonModel.fireActionPerformed(Unknown Source)
at javax.swing.DefaultButtonModel.setPressed(Unknown Source)
```

```
at javax.swing.AbstractButton.doClick(Unknown Source)
at javax.swing.plaf.basic.BasicMenuItemUI.doClick(Unknown Source)
at javax.swing.plaf.basic.BasicMenuItemUI$Handler.mouseReleased(Unknown
Source)
at java.awt.AWTEventMulticaster.mouseReleased(Unknown Source)
at java.awt.Component.processMouseEvent(Unknown Source)
at javax.swing.JComponent.processMouseEvent(Unknown Source)
at java.awt.Component.processEvent(Unknown Source)
at java.awt.Container.processEvent(Unknown Source)
at java.awt.Component.dispatchEventImpl(Unknown Source)
at java.awt.Container.dispatchEventImpl(Unknown Source)
at java.awt.Component.dispatchEvent(Unknown Source)
at java.awt.LightweightDispatcher.retargetMouseEvent(Unknown Source)
at java.awt.LightweightDispatcher.processMouseEvent(Unknown Source)
at java.awt.LightweightDispatcher.dispatchEvent(Unknown Source)
at java.awt.Container.dispatchEventImpl(Unknown Source)
at java.awt.Component.dispatchEvent(Unknown Source)
at java.awt.EventQueue.dispatchEvent(Unknown Source)
at
com.iver.andami.ui.AndamiEventQueue.dispatchEvent(AndamiEventQueue.java:58)
at java.awt.EventQueue.dispatchEvent(Unknown Source)
at java.awt.EventQueue.dispatchEvent(Unknown Source)
at java.awt.EventQueue.dispatchEvent(Unknown Source)
at java.awt.EventQueue.dispatchEvent(Unknown Source)
at java.awt.EventQueue.run(Unknown Source)
Caused by: org.postgresql.util.PSQLException: ERROR: relation "public.PolyPostGIS" does
not exist
```

```
at org.postgresql.util.PSQLException.parseServerError(PSQLException.java:139)
at org.postgresql.core.QueryExecutor.executeV3(QueryExecutor.java:152)
at org.postgresql.core.QueryExecutor.execute(QueryExecutor.java:100)
at org.postgresql.core.QueryExecutor.execute(QueryExecutor.java:43)
at
org.postgresql.jdbc1.AbstractJdbc1Statement.execute(AbstractJdbc1Statement.java:517)
at
org.postgresql.jdbc2.AbstractJdbc2Statement.execute(AbstractJdbc2Statement.java:50)
at
org.postgresql.jdbc1.AbstractJdbc1Statement.execute(AbstractJdbc1Statement.java:298)
at
com.iver.cit.gvsig.fmap.drivers.jdbc.postgis.PostGISWriter.initialize(PostGISWriter.java:84)
... 64 more
DEBUG AWT-EventQueue-1 com.iver.andami.ui.mdiFrame.MDIFrame - Memory usage
145322 KB
DEBUG AWT-EventQueue-1 com.iver.andami.ui.mdiFrame.MDIFrame - Memory usage
145322 KB
```