

gvSIG 2.3.1.2501 final : Untitled



File Layer Show View Map Tools Window Help

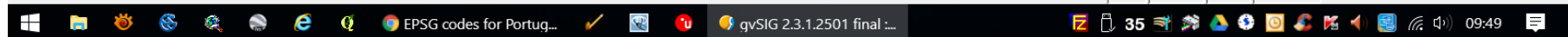


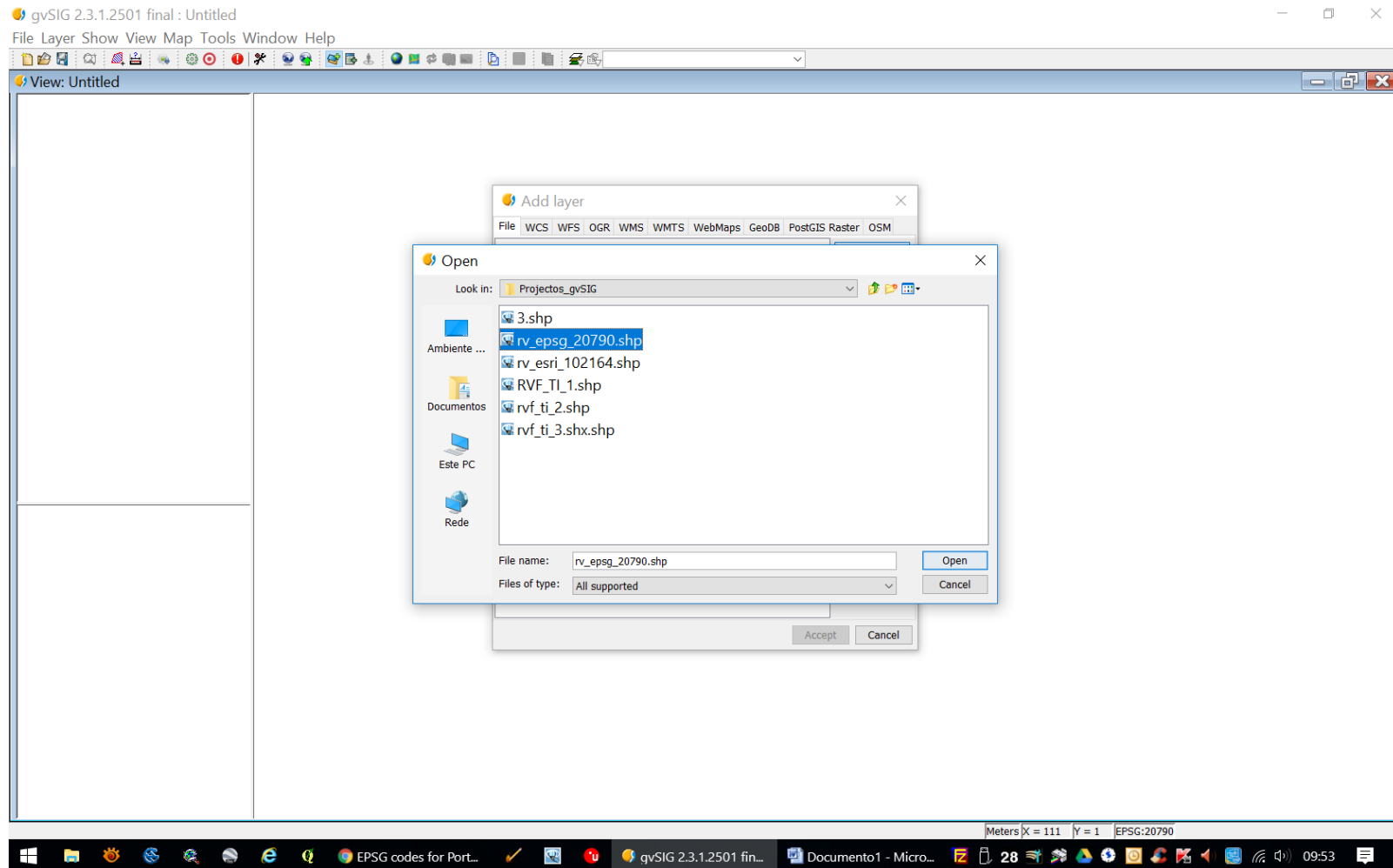
View: Untitled



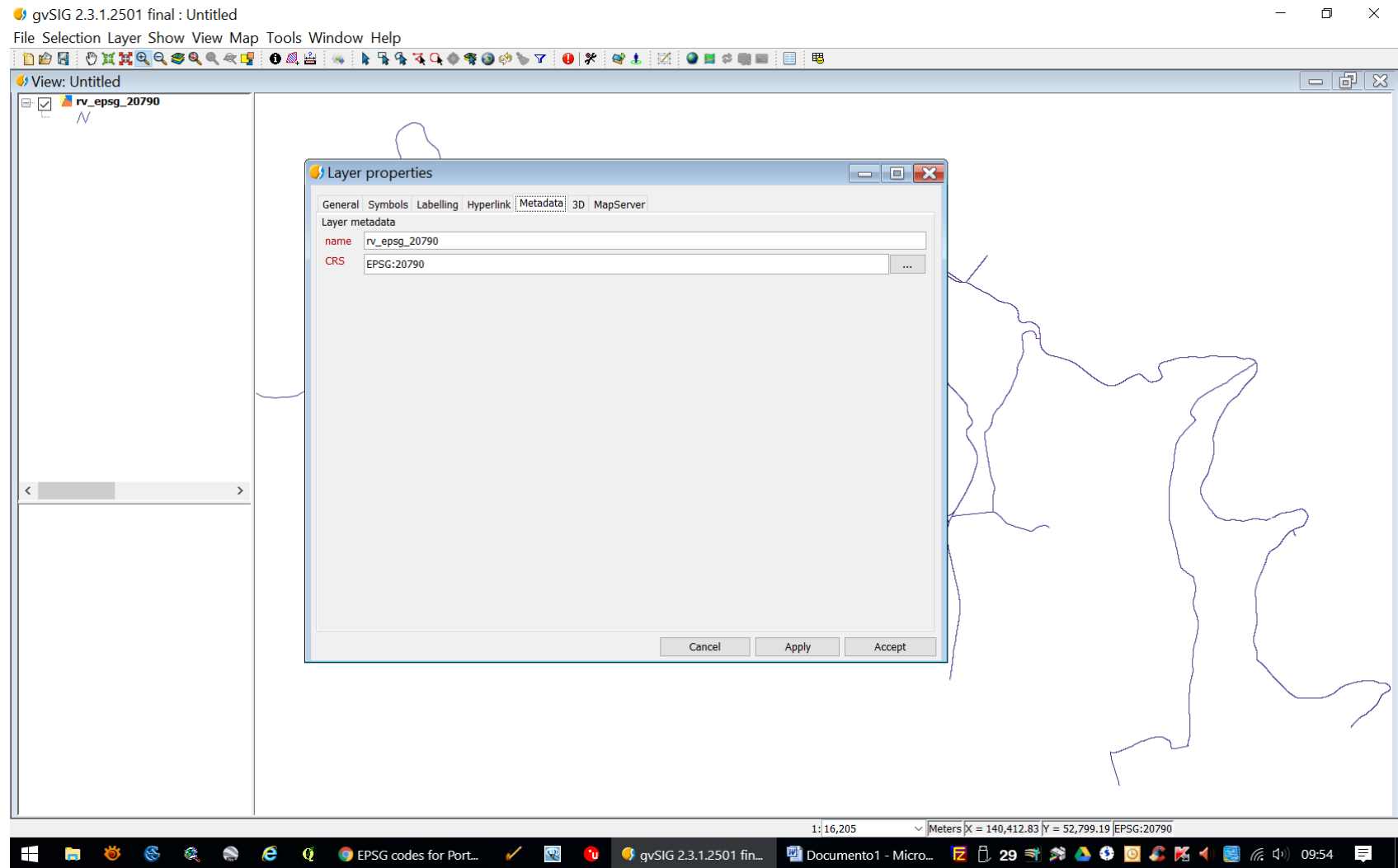
This is an empty View with a
EPSG:20790 projection system

Meters X = 293 Y = 456 EPSG:20790

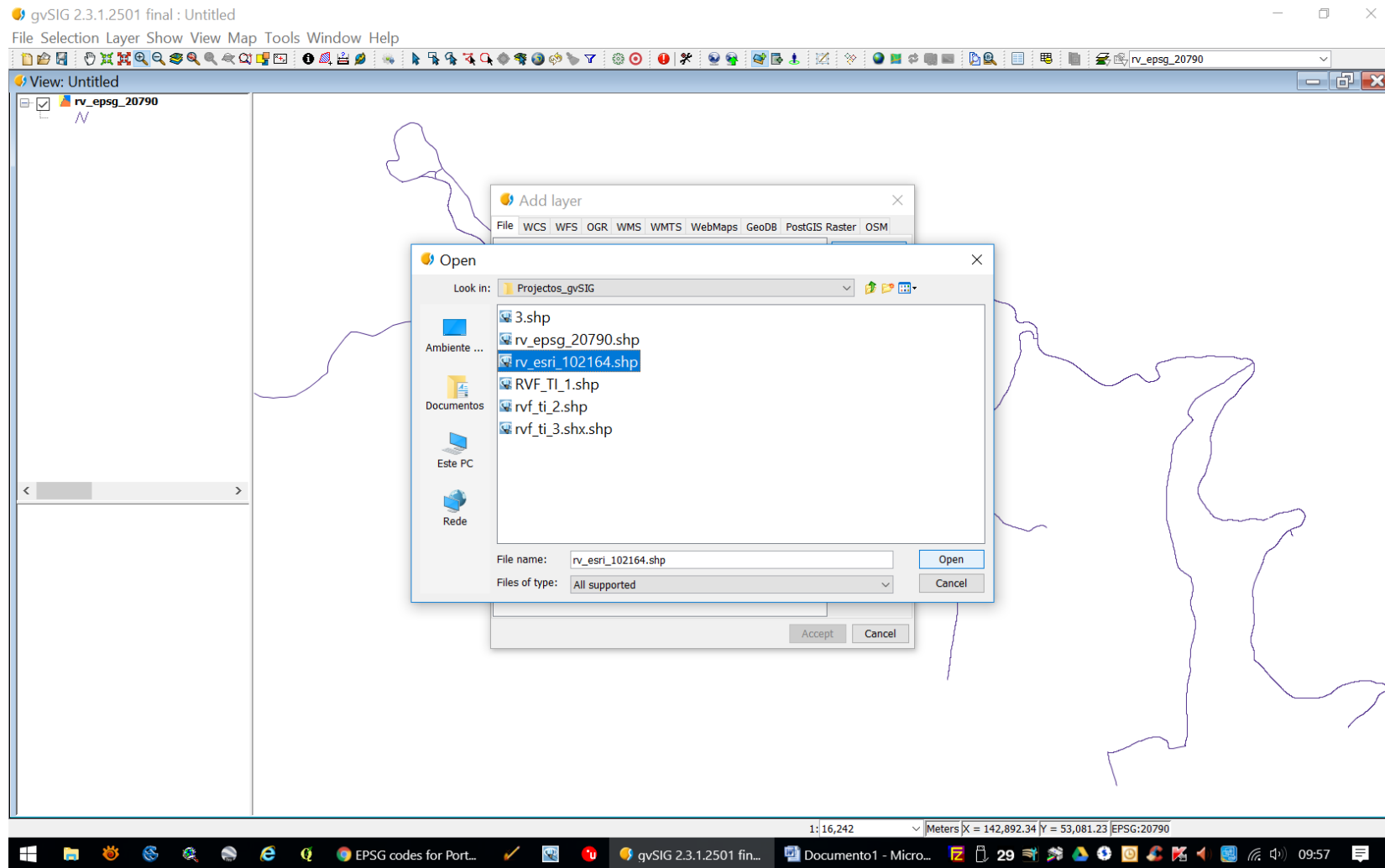




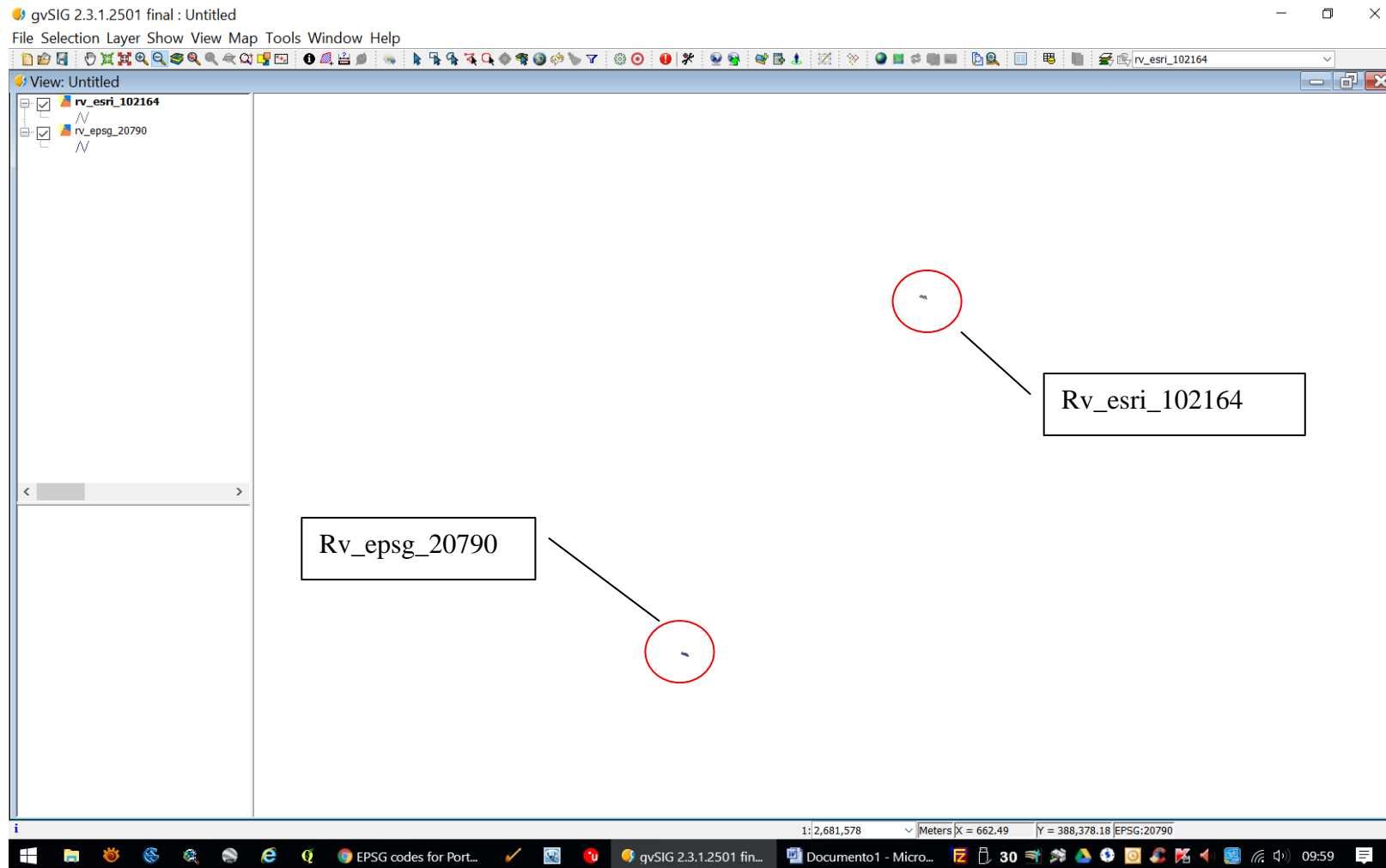
Choosing an EPSG:20790 shapefile...



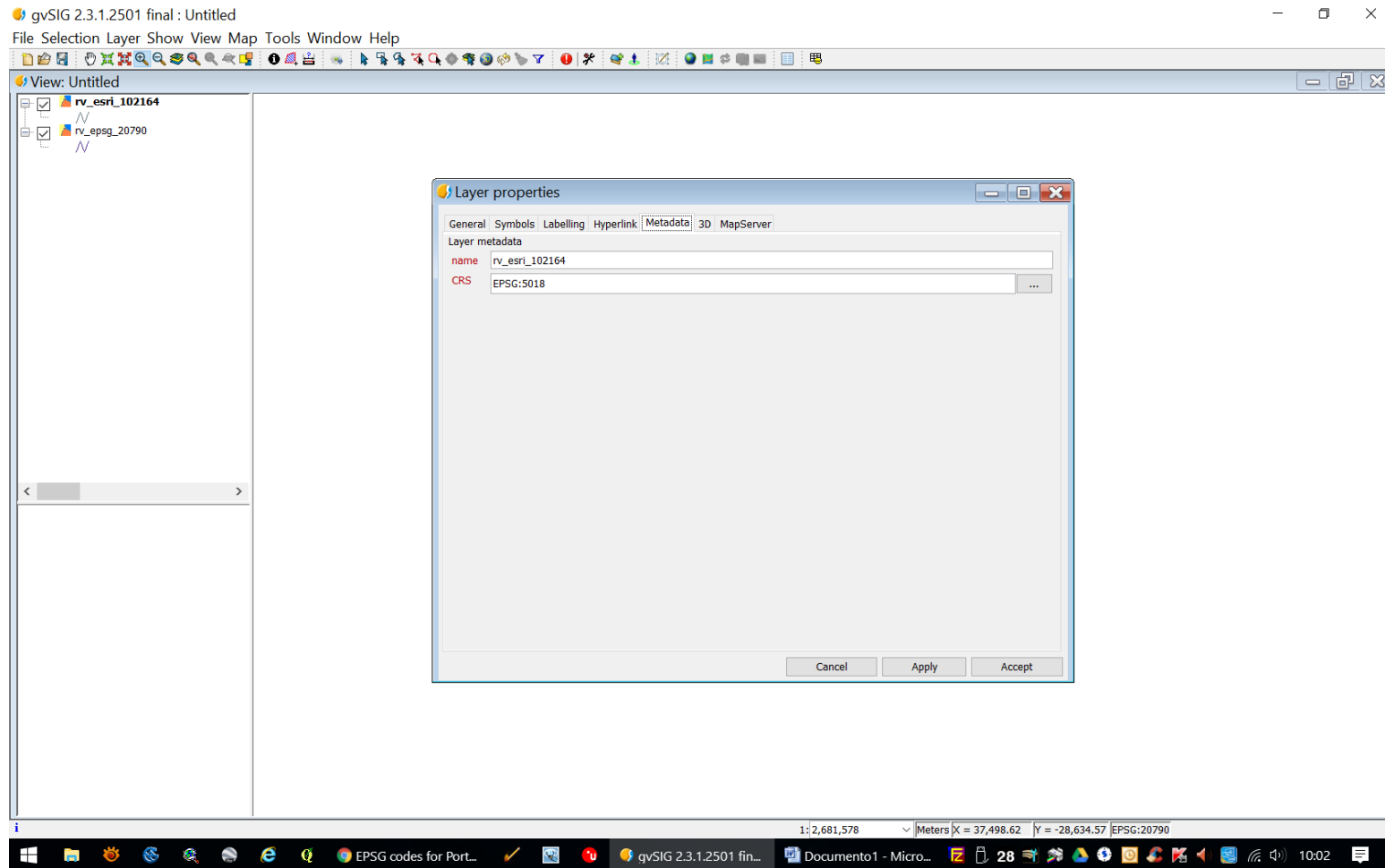
Layer Properties for “rv_epsg_20790.shp” – please note name of CRS = EPSG:20790 which is correct



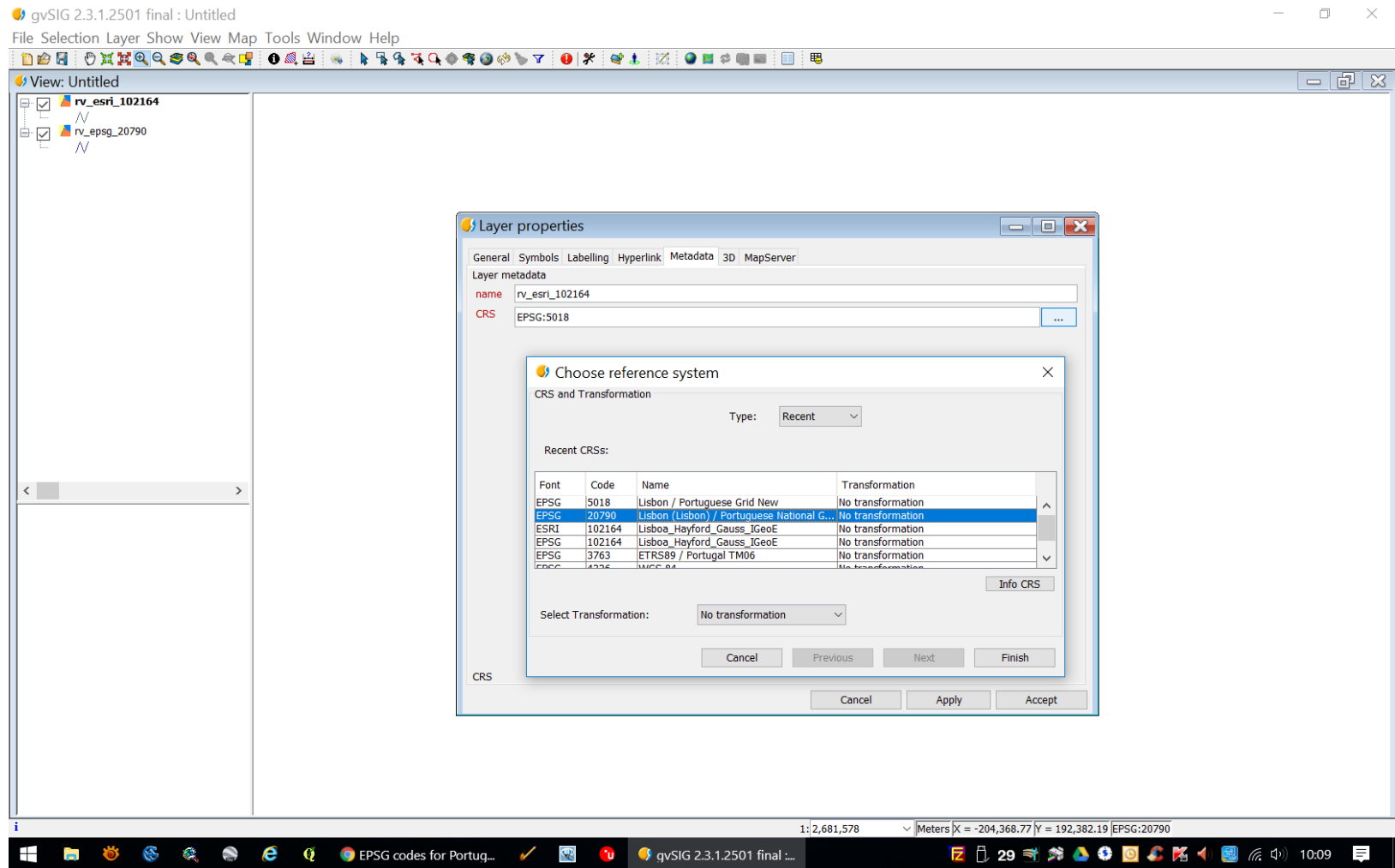
Loading shapefile "rv_esri_102164.shp"



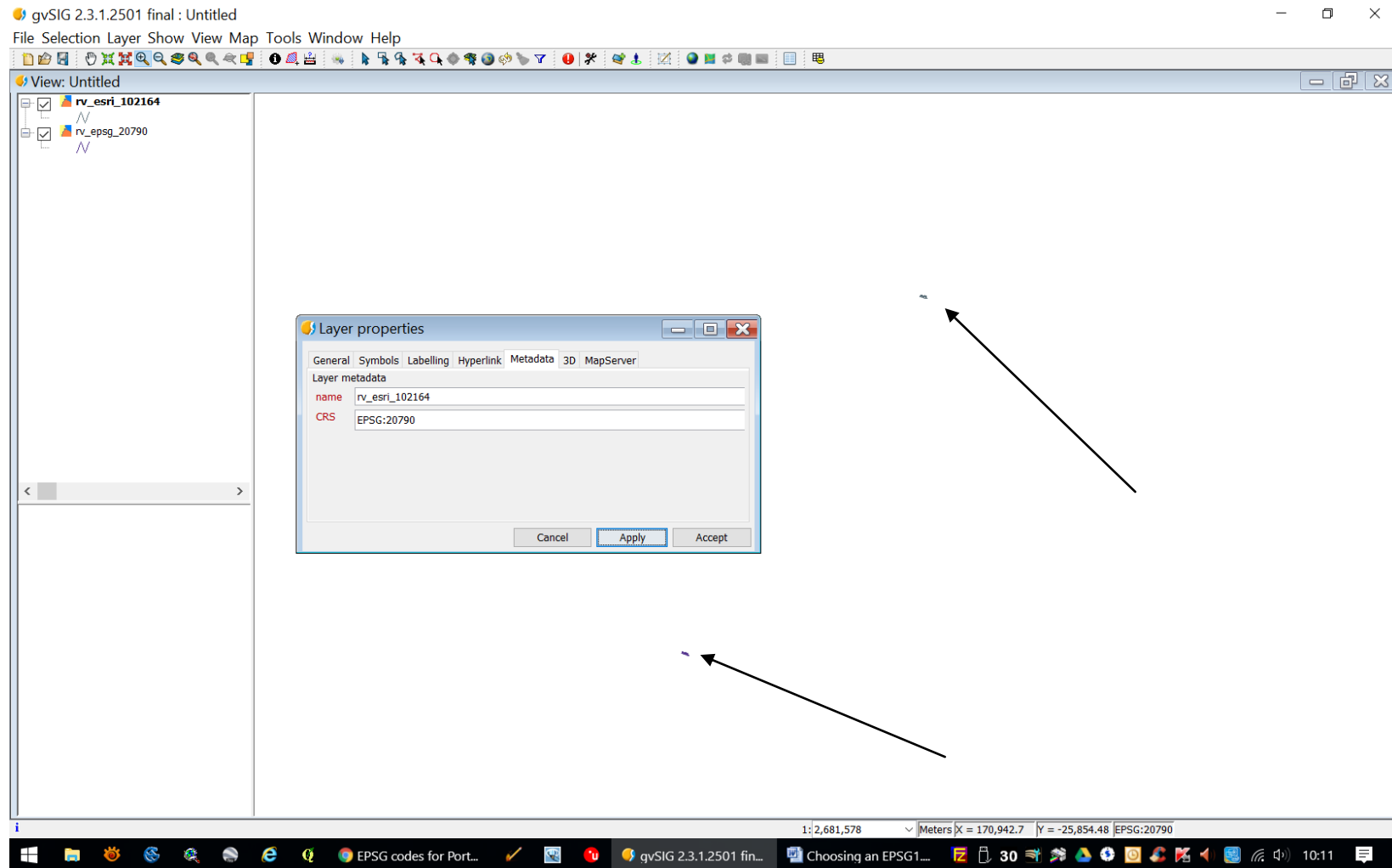
After zooming to all



Layer properties for shapefile “rv_esri_102164” - please note CRS name that appears automatically: “EPSG:5018” which is incorrect: it should be EPSG:20790 !



Trying to change the CRS from EPSG:5018 to EPSG:20790.....



Nothing happens !